

## Cozy Heart Afghan



Afghan measures approx. 51" x 59".

**RED HEART®** "Light & Lofty®": Art. E708 (6 oz / 140 yard solids) (4.5 oz / 105 yard multis and stripes): 1 Skein No. 9334 Café Au Lait **CC**, 2 skeins No. 9631 Sage **CB**, 9 skeins No. 9380 Antique Blue **CA**.

**Afghan Crochet Hook:** 11.5 mm [US P-16].

**Crochet Hook:** 8 mm [US L-11].

Yarn Needle.

---

**GAUGE: 8 sts = 4"; 8 rows = 4". CHECK YOUR GAUGE. Use any size hook to obtain the gauge given.**

---

With afghan hook and **CA**, ch 103.

**Row 1:** Insert hook into 2<sup>nd</sup> ch from hook, yo, draw yarn through st, \* insert hook in next ch, yo, draw yarn through st; rep from \* across – 103 lps on hook.

Second Half of Row: Yo, draw yarn through 1 lp, \* yo, draw yarn through 2 lps on hook; rep from \* across until 1 lp remains and counts as first lp of next row.

**Rows 2-15:** Working in Tunisian Knit Stitch, \*insert hook from front to back between both vertical strands of the next st, yo, draw yarn through st; rep from \* across – 103 lps on hook.

Second Half of Row: Yo, draw yarn through 1 lp, \* yo, draw yarn through 2 lps on hook; rep from \* across until 1 lp remains and counts as first lp of next row. At end of Row 15, change to **CB** in last st. Fasten off **CA**.

**Row 16:** With **CB**, rep Row 2, changing to **CC** in last st. **DO NOT FASTEN OFF CB**, but carry up side of work.

**Rows 17-18:** With **CC**, rep Row 2. Fasten off **CC** at end of Row 18, pick up **CB**.

**Row 19:** With **CB**, rep Row 2.

**Rows 20-26:** Using separate balls of color, rep Row 2 following chart as indicated.

**Row 27:** With **CB**, rep Row 2.

**Rows 28-29:** Rep Rows 17 and 18.

**Row 30:** Rep Row 19, changing to **CA** at end of row. Fasten off **CB**.

**Rows 31-94:** With **CA**, rep Row 2.

**Rows 95-109:** Rep Rows 16-30.

**Rows 110-124:** With **CA**, rep Row 2. Fasten off.

**Upper and Lower Edging:** With right side facing, using L crochet hook, join **CA** in top right hand corner st. **Row 1:** Ch 1, sc in same st as joining and in next 2 sts, ch 3, sl st in last sc made, \* sc in each of next 3 sts, ch 3, sl st in last sc made; rep from \* across to last 2 sts, sc in last 2 sts. Fasten off.

Rep Row 1 on lower edge of afghan.

*Designed by Glenda Winkleman  
For Coats & Clark*

---

**ABBREVIATIONS:** **approx** = approximately; **beg** = begin(ning); **CA** = Color A; **CB** = Color B; **CC** = color C; **ch** = chain; **lp(s)** = loop(s); **mm** = millimeters; **pat(s)** = pattern(s); **rem** = remaining; **rep** = repeat; **sc** = single crochet; **sl** = slip; **sl st** = slip stitch; **sp(s)** = space(s); **st(s)** = stitch(es); **yo** = yarn over needle; [ ] = work directions in brackets the number of times specified; \* **or** \*\* = repeat whatever follows the \* or \*\* as indicated.

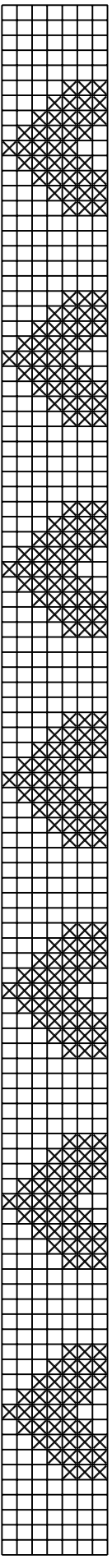
©2008 COATS & CLARK Inc, Greer, SC, 29650

[www.coatsandclark.com](http://www.coatsandclark.com)

[www.modadea.com](http://www.modadea.com)



# COZY HEART AFGHAN



X = Antique Blue    □ = Sage